

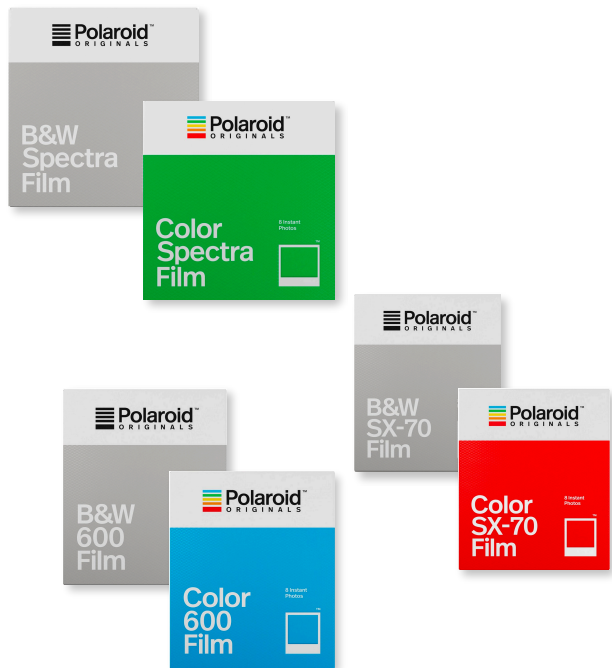
Recommended places to buy your film pack

<https://uk.polaroidoriginals.com/collections/polaroid-film>

<https://www.jessops.com/consumables/film>

<https://www.urbanoutfitters.com/en-gb/photography>

<https://digitaloutlet.co.uk/photography/cameras/instant>



Contact us:

82 Hearsey Gardens, Blackwater,
Camberley,
Surrey,
GU17 0ES

Phone: (+44) 07800741009

Email: sales@cm40.uk

CM40



Welcome to your Polaroid Instant Camera



A short to guide to help you

Polaroids are vintage cameras which depend on the battery within the film pack to operate both the camera and the flash, (if the camera has a flash).

Without this pack the camera will not operate.

Before you start, always inspect the film pack packaging to ensure the pack is free from damage & holes. If the packaging has any damage this may start the chemical reaction prematurely: often this cause of a camera not working correctly. If this the case, contact the vendor of the film pack.

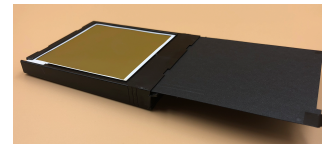
[CM40 - Polaroid Instant Camera](#)

[CM40 Youtube Channel](#)



What should happen when you insert your film pack?

When the film pack is inserted, you should hear the film start to wind.
When fully wound, the film pack tongue (black card sheet covering the film pictures) should shot out.



Film pack keeps jamming in the Polaroid?

Once the film pack tongue is out?

Once the tongue (black card sheet covering the film prints) has shot out, your camera will be ready for the first shot!

If your camera has a built in flash you may hear it charging.

If your camera does not come with a flash it will have a number window telling you how many shots are left.

What happens if you insert the film and the camera doesn't go straight away?

This normally occurs when the camera hasn't had a film pack inserted for while, simply take the pack out and re-insert. You may need to do this a couple times for the camera to realise the film pack has been inserted.

Your film pack is made of chemicals which once exposed to the air & light will start to react. Some modern film packs such as sold by Polaroid Originals may take longer to develop than the original polaroid film packs (this is normal).

When you receive your film pack, inspect the packaging for any damage as this may start the reaction and may cause problems such as:

Pictures getting stuck together and jamming the polaroid

Pictures having waves/ripples or under/over exposed areas

Once you are happy that your film is perfect, then you are ready to start. Please remember these are vintage cameras that not produce pictures of a similar quality as you may get from your phone/digital camera - this is part of their charm!